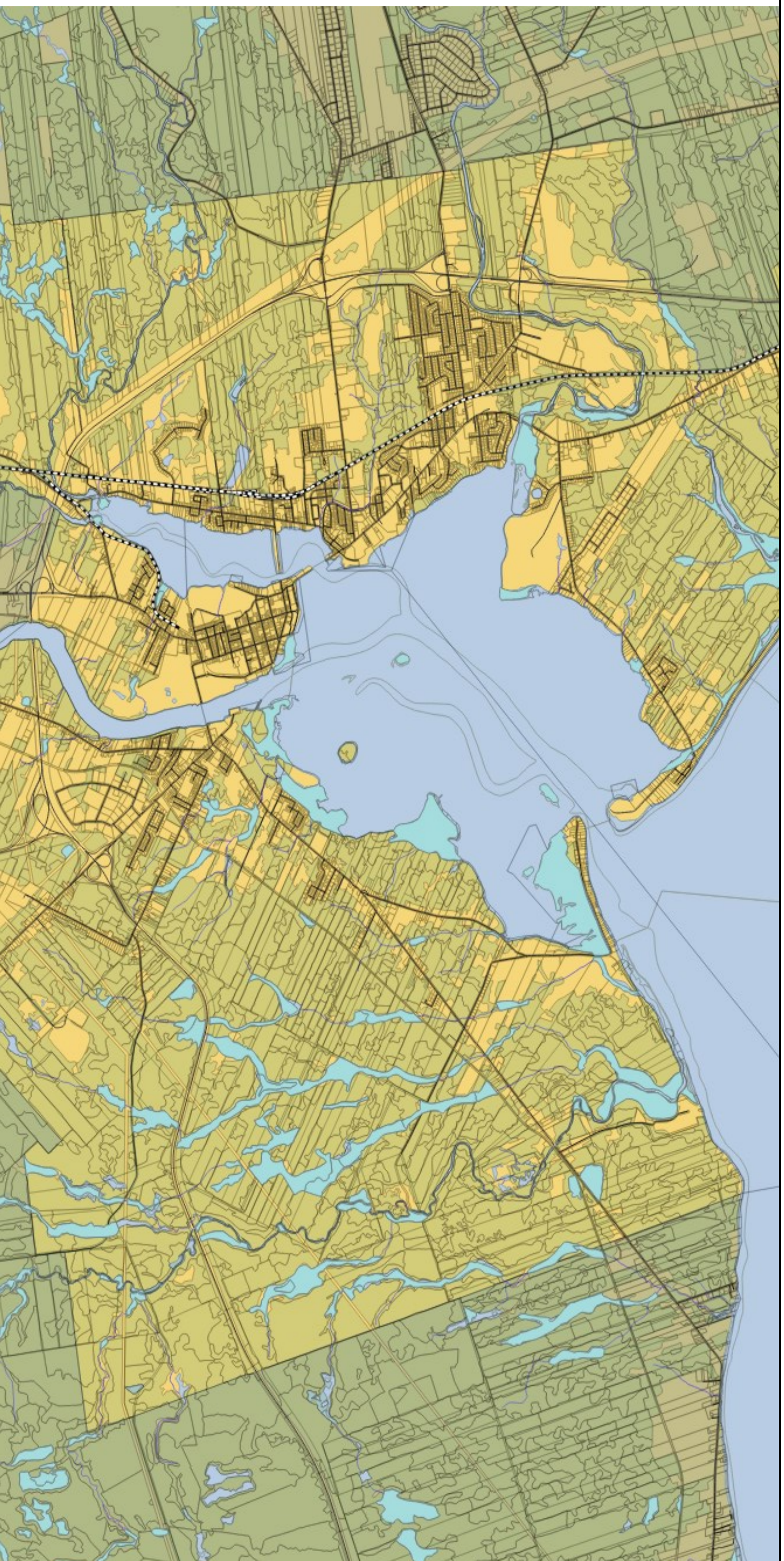


City of Bathurst, New Brunswick



Energy Mapping Legend

- Renewable Electricity
- Waste Heat
- Renewable Heat
- District Energy Plant
- District Energy Load
- Mixed Use Development
- High Density
- Residential Retrofit Opportunities
- Key Destinations
- Job Creation Area
- Transit Backbone and Major Destination
- Transit Stops/Stations
- Connectivity (bike, pedestrian paths)
- Inter-community Transit Route

